

WHY CHOOSE ATMOR?



For add on hot water, the Atmor instant water heater is the most optimal choice in saving, efficiency and producing unlimited supply of hot water, whenever you want it and wherever you need it, while maximally saving on the water and electric power.

With 25 years of dedication in the New Zealand market, Atmor has an unrivaled reputation as the leading international distributor of Atmor Instant water heaters.

Together with the best heating technology, we add advanced features such as:

- Temperature stabilization systems
- Shower preference memory settings
- Complies with international standards
- Green & eco products

Warranty

Heaters have a 12 months parts / or replacement warranty providing they have been installed correctly/by a qualified trades person. This warranty does not effect your rights under the Consumers Guarantees Act.

FREEPHONE 0800 101 201 / sales@atmor.co.nz / www.atmor.co.nz

AVAILABLE FROM:

ATMOR WATER HEATERS - 25+ YEARS IN NEW ZEALAND

INSTANT WATER HEATERS



*Unlimited **Hot** Water
Exactly Where You Need It!*

25⁺ YEARS

OF PROVEN PRODUCTS IN
THE NEW ZEALAND MARKET



Visit us at www.atmor.co.nz



Manufactured to comply with
N.Z. Electrical Standards

ATMOR

INLINE 900



CLOSED PRESSURE SYSTEM

Specifications

Model	900
Power rating available	3.5-9.5kw
Rated current (For 230V)	20A- 45A
Hot water (L/min) ambient inlet 12°C	8kW - 4L/min @ 42°C 8kW - 3L/min @ 52°C
Rated pressure	0.3-6 bar
Element type	Tubular element
Temperature setting range	Flow of water to control
Dimensions H x W x D (mm)	185 x 300 x 90
Water connections	½" BSP
Protection class	IP24
Pressure release	Included with water heater
Limiting valve/isolating valve	Recommended
Plumbing	Recommend high pressure flexi hose between fixed plumbing & heater
Installation requirements	AS/NZS 3350.2,35

AVAILABLE

Code: INWHLIN3	3.5kW / 230v
Code: INWHLIN5	5.5kW / 230v
Code: INWHLIN7	7kW / 230v
Code: INWHLIN8	8kW / 230v
Code: INWHLIN9	9.5kW / 230v



Closed pressure system.

The Inline Heater is installed before the valve (tap) and can be below eye level in a convenient position on a wall or inside a vanity unit. Heater features built in safety release valve and temperature heat setting. Accessories not supplied.

Standard low pressure tap-ware and shower accessories can be used. Heater can be connected to more than one point of use, making the In-Line a smart choice for, workplace, public service centres or wherever a hidden installation is required.

NOTE: Supplies hot water to one outlet at a time. Must be installed close to delivery point



SINGLE SINK



HIDDEN
INSTALLATION



SHOWER + SINK



SINK + SINK

ATMOR

BLUE WAVE 402



SHOWER HEATER COMBO

Specifications

Model	402
Power rating available	7-8.5kw
Rated current (For 230V)	32A- 40A
Circuit breaker	Earth leakage must be installed
Hot water (L/min) ambient inlet 12°C	8kW - 4L/min @ 42°C 8kW - 4.5L/min @ 37°C
Rated pressure	0.3-6 bar
Element type	Tubular element
Temperature setting range	Flow of water to control
Dimensions H x W x D (mm)	340 x 238 x 110
Water connections	½" BSP
Protection class	IPX4
Pressure release	Built in
Plumbing	Flexi hose between fixed plumbing & heater
Installation requirements	AS/NZS 3350.2,35

AVAILABLE

Code: INWHBW7	Blue Wave 7kW / 230v
Code: INWHBW8	Blue Wave 8kW / 230v

Single outlet vented shower system.

The Blue Wave Heater is installed at point of use (Inside shower cubicle) and includes full shower accessories. With built-in water flow control (tap) and temperature heat setting dial, the Blue Wave is the smart choice for unlimited hot showers in your home, garage, sleep-out, holiday place or local club.

- Fully temperature Stabilised
- Overheat protection
- Neons combine to indicate lower pressure
- Temperature/flow selection with single turn valve
- Luxurious shower set including slide bar and self-cleaning shower head with 4 spray patterns
- Green & Eco product - Energy & water saver



Push Start/Stop Button
Activating and turning off the unit while maintaining desired flow and temperature for repeated use



Temperature Settings
Maximises energy savings



Unlimited Hot Water Supply
Energy & water saver

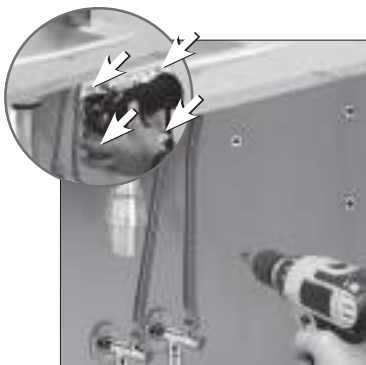


Self-Cleaning Shower Head with 4 Spray Patterns
Lets you adjust water flow and enjoy long invigorating showers

Step 1

Find the optimal place.

Drill 4 holes and insert Plugs.



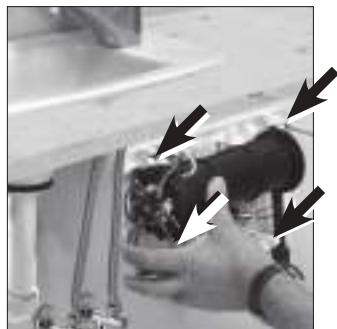
Step 2

Open the entrance cable in the back of the unit.
Be sure to open the side of the cable



Step 3

Hang the unit on the wall by 4 screws.
Don't forget to inset the electric cable before.



Step 4

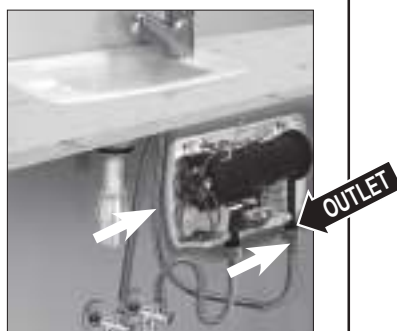
Connect the Cold water hose to the inlet on the left side of the unit.
(Don't forget to insert rubbers).
Be sure to use reinforced hose.
Be sure to close it properly.



Step 5

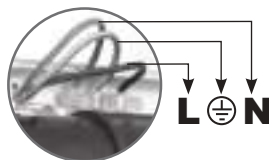
Connect the Hot water hose to the outlet (Don't forget the rubbers).
Be sure to use reinforced hose.
Be sure to close it well.
Open the water supply and check for leakage around the hoses.
If there is no leakage - Go to step 6

If there is leakage, find the leakage point and fix it.
Check again.
Don't continue unless you sure there is no leakage.



Step 6

Connect the electric cable to the Terminal block.



Step 7

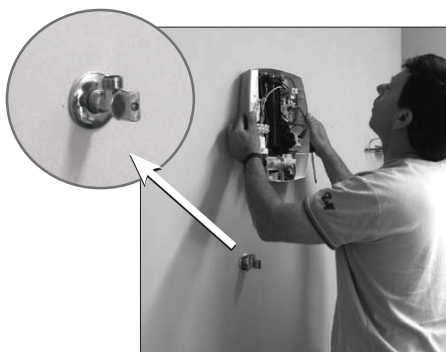
Close the cover by 4 short screws

After closing the screws
Insert the Gray Bottom cover



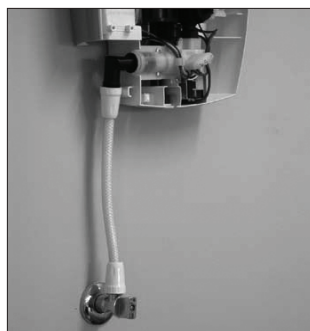
Step 1

Fit isolating tap on cold water supply



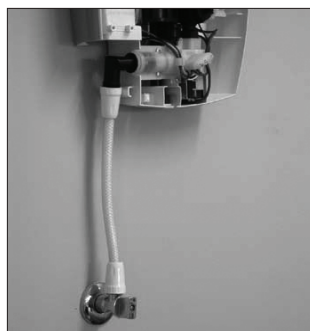
Step 2

Position heater at eye level or higher. Fix to the wall 2 top and 1 bottom screw



Step 3

Connect cold water supply inlet hose



Step 4

Assemble and fit the sliding shower bar to the wall including the shower hose and rose



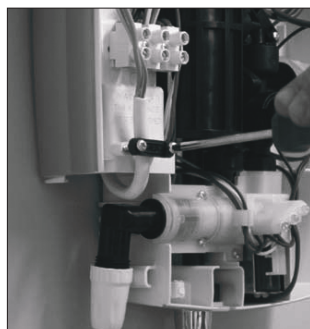
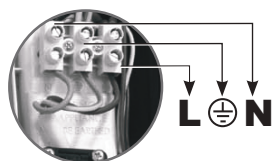
Step 5

Turn on the water to fill the heating chamber and check for leaks



Step 6

Having already entered the power cable, connect to the terminal block.



Step 7

Attach the front cover, round the knobs to match the correct pivot and secure by screw top and bottom.



For further information on installation and operation please refer to leaflet enclosed with the heater.